

HOFMANN APPRENTICESHIPS

- FITTING & MACHINING
- FABRICATION



Hofmann Engineering commitment to Apprentice Training

Since 1969 Hofmann Engineering has provided specialist engineering services to Australia's industry leaders.

Quality Assurance accreditation by Lloyds complements our total quality culture.

Our commitment to continuous quality-improvement touches every aspect of our products, services and customer support.

HOFMANN ENGINEERING PTY LTD

3 ALICE STREET,
BASSENDEAN, PERTH,
WESTERN AUSTRALIA 6054

Telephone: +61 8 9279 5522

Facsimile: +61 8 9279 9386

Internet: www.hofmannengineering.com

Email: mail@hofmannengineering.com



BACK GROUND

Hofmann Engineering is a successful family owned and run engineering business. Precision and Expertise that Hofmann Engineering offers in manufacturing and refurbishing precision mining equipment is sought from companies locally and internationally.

Hofmann Engineering staff and management alike pursue a single goal – a total focus on quality in every aspect of manufacture, customer service and on time delivery. We believe that “benchmarking”, a process by which we compare ourselves to the leaders in specific disciplines, is the path to continuous improvement. Our individual skills and experience are what underlies our reputation as a totally self-contained engineering company with all resources “under one roof”.

Our management is structured to deliver results and attain the highest quality through a “hands on” approach to every project. Problems are treated as challenges, while innovation provides solutions for our clients. This includes our policy of exposing our employees to the latest overseas technology and systems by means of seminars and other industry development programs. We recognise that staff training and personal development are vital in helping us to preserve and strengthen our position as one of the leaders in our industry.

INVESTING IN THE FUTURE

At Hofmann Engineering we believe that the lifeblood of our industry is carried by tomorrow's trades people. We have a strong and ongoing commitment to our apprenticeship program, which provides apprentices with a structured and challenging education in their chosen trade. We are proud, that upon completion of their training, our craftspeople are eagerly sought after.

Hofmann Engineering not only has a commitment to offering good technical training but also to personal well being. As Hofmann Engineering consider safety a priority, many safety programs and incentives and have been implemented for all to follow.

Apprentice Training Areas



ENGINEERING & DESIGN TRAINING

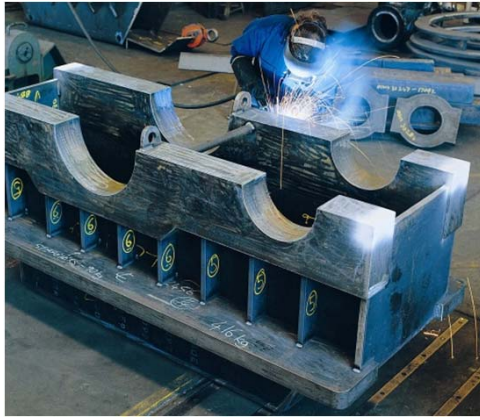
Apprentices learn computer aided drafting and engineering design. They also attend TAFE to enhance their training. It is required that they complete and pass a range of both compulsory and optional subjects in order to complete their apprenticeship.

GENERAL MACHINING

Apprentices learn about different materials used in engineering. As well as the Material store they will gain experience in Sawing, Drilling & Marking off, Computer controlled Machining, Grinding, Milling, and Fine machining – tool making.

INSPECTION

Apprentices learn how to measure and inspect finished products. They become familiar with a wide range of measuring and testing equipment. They will also be exposed to quality assurance systems and the calibration of measuring equipment.



GEAR MANUFACTURING

Apprentices will be exposed to the largest gear manufacturing facilities in Australia. They will be trained in all of the gear manufacturing areas including; gear cutting, gear grinding and tool & cutter grinding.

FABRICATION

Qualified welders train apprentices in the practice of accredited welding procedures. Apprentices may be involved in the fabrication of large gears and gear boxes. They will also be exposed to specialised welding procedures and projects.

HEAT TREATMENT

In this area apprentices would work in one of Australia's largest specialised heat treatment facilities encompassing:

- Oil quench & tempering, stress relieving.
- Gas carburising via pit furnace or fluid bed 1800mm dia. X 3100mm.
- Tool steel heat treatment.
- Nitriding, carbon nitriding, nitro carburising.



MILLING AND BORING

Apprentices learn how to operate all types of milling and boring machines including conventional and computer (CNC) controlled. They will start on small milling machines and then graduate up to larger more complex machines.

TURNING

Apprentices will learn how to run a range of lathes including conventional and computer (CNC) controlled. Depending on ability, the apprentice may be given the opportunity to operate some of the largest lathes in Australia.

FITTING / ONSITE

Fitting involves gearbox fitting, heavy duty fitting and light fitting. Apprentices may be given the opportunity to travel to site locally or overseas. The above picture shows a complete mill gear drive manufactured by Hofmann Engineering and installed by our site team in Africa.