

SIZERS

- MMD
- FLS/ABON

- Repair and Supply of Complete Sizer Shafts
- Product Improved Replacement Spares
- New & Repair/ Overhaul Sizer Gear Boxes
- Onsite Services and Ongoing Support

Since 1969 Hofmann Engineering has provided specialist engineering services to Australia's industry leaders.

Quality Assurance accreditation by Lloyds complements our total quality culture.

Our commitment to continuous quality-improvement touches every aspect of our products, services and customer support.

HOFMANN ENGINEERING PTY LTD

3 ALICE STREET,
BASSENDEAN, PERTH,
WESTERN AUSTRALIA 6054

Telephone: +61 8 9279 5522

Facsimile: +61 8 9279 9386

Net: www.hofmannengineering.com

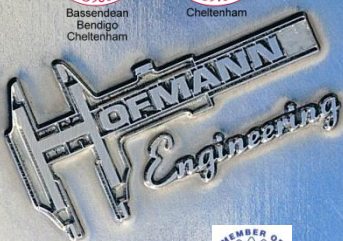
Email: mail@hofmannengineering.com



Bassendean
Bendigo
Cheltenham



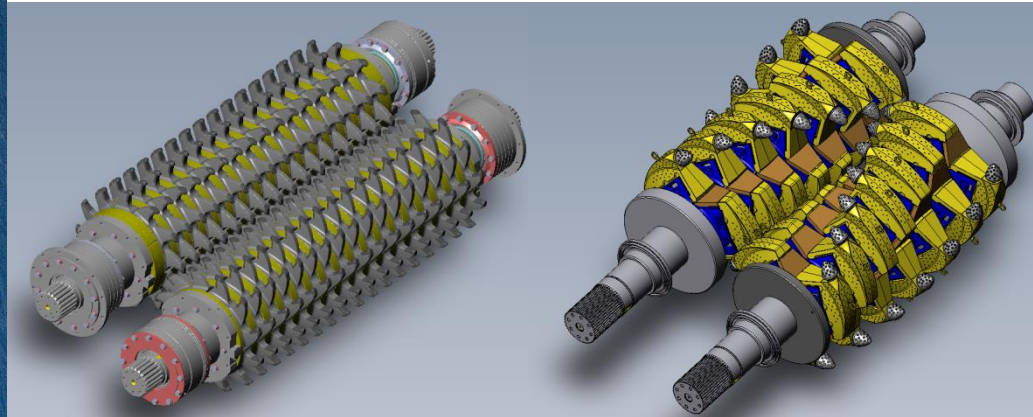
Cheltenham



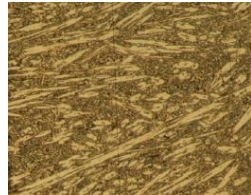
1300 Sizer Shaft on Hofmann Engineering's 10m Lathe for refurbishment

Hofmann Engineering offers complete mineral sizer solutions including new fabrication and overhaul of sizer shafts, teeth, spacers & caps, gearboxes and onsite service support.

A fully equipped fabrication, heat treatment & machine shop that can handle any individual component up to 200T, allows for the complete process to be carried out 'under one roof'.



Above: Hofmann product improved shaft assembly designs for FLS/Abon (left) and MMD (right) sizers.



From Left To Right: Sizer teeth at different stages of wear for analysis, Wear profiling of sizer tooth, Metallurgical laboratory inspection equipment, micrograph of a trialled hard facing consumable with a hypereutectic structure of primary carbides designed for extreme abrasive wear.

Hofmann Engineering's in house metallurgical laboratory, coordinate measuring machines & laser scanning facilities allows for detailed wear profiling of wear components and analysis of base & overlay material chemistry & microstructure. Coupled with ore specific data this allows for geometric and material optimisation of wear components. Hofmann Engineering designs and manages the casting process 'foundry direct' to ensure both the highest quality and most competitive supply of raw castings.



Hofmann Engineering's market leading gear manufacturing and gearbox fitting capabilities facilitate in house manufacture of new and refurbished MMD and Abon/FLS Sizer gearboxes.