

**HOFMANN
ENGINEERING**

GRINDING MILL SHELLS & HEADS To Ø44 ft

- Fabricated Steel
- Solid Stainless Steel
- Stainless Steel Clad
- Bimetallic Plate
- Epoxy Coated
- Cast Steel
- Cast SG Iron

Since 1969 Hofmann Engineering has provided specialist engineering services to Australia's industry leaders.

Quality Assurance certification by Lloyds complements our total quality culture.

Our commitment to continuous quality-improvement touches every aspect of our products, services and customer support.

HOFMANN ENGINEERING PTY LTD

3 ALICE STREET,
BASSENDEAN, PERTH,
WESTERN AUSTRALIA 6054

Telephone: +61 8 9279 5522

Facsimile: +61 8 9279 9386

Net: www.hofmannengineering.com

Email: mail@hofmannengineering.com



MANUFACTURING CAPACITY:

- 2 Manufacturing Sites
- Bassendean - Western Australia
 - Bendigo - Victoria [Australia]

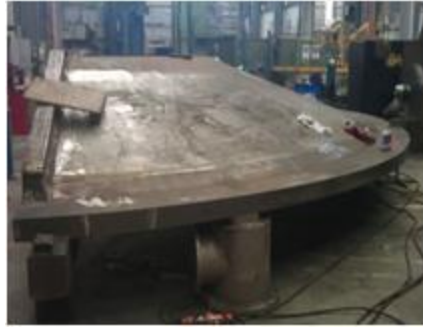
- **Max Shell Size:** Ø13.4m (44ft)
- **Lift Capacity:** 210 tonne (231 ton) x 17m (55.7ft) under crane hook.
- **Vertical Rolls:** 6000 tonne (6600 ton) & 4000 tonne (4400 ton).
- **Sub Arc Welding** using tandem head inverter technology.
- **Machining** to Ø16m (52ft) x 6m (19.7ft) x 300 tonne (330 ton) capacity rotary table.
- **Floor Borers:** 15.3m (50ft) x 5.0m (16ft) & 12m (39ft) x 3.9m (12.8ft).
- **Heat Treatment:** Stress Relieving Ø14m x 4m high.
- **Surface Finish:** Abrasive Blast / Paint Booths / Epoxy Coating, Rubber Lining.





6000 TONNER VERTICAL ROLLING PRESS

Max thickness 220mm
Width 3650mm
Hardness 390BHN



FABRICATION

Typical steel plate to AS3678 Grade 250, EN S235JR, ASTM A36.
Segments profiled to shape with bevelling.
Stainless Steel Clad plate available.



FABRICATION

Plate UT examination to AS 1710
Flange plate Z property tensile tested.
Welded and tested to AWS D1.1
Stainless Steel to AWS D1.6 available.



VERTICAL BORER

Bendigo:

Schiess Ø9.22m x 4.45m height 200T
Schiess Ø7.0m x 3.50m height 200T

Bassendean:

Schiess Ø8.75m x 2.7m height 200T



FLOOR BORER

Bendigo:

INNOCENTI CNC
15.3m x 5.0m high x 1.25m Z travel.
Floor plate area 19.50m x 6.55m
CNC Rotary Table 2.5m x 2.5m x 200T



FLOOR BORER

Bassendean:

WMM BP160CNC
12m x 3.9m high x 2.0m Z travel.
Floor plate area 18.0m x 6.0m
CNC Rotary Table



LARGE VERTICAL MACHINE:

Bassendean & Bendigo:

Floor Borer and 200T Table to machine and drill Mill Shells up to Ø15m by 7m height.



SZIM GANTRY MACHINING CENTRE:

Unique boom arrangement combined with a rotary table will allow the machine to act as vertical borer and drill on the same set up. Max capacity Ø15m.



WELDING MANIPULATOR:

Adjustable to accommodate head angle. Manipulator & Boom drives synchronised. 200 tonne capacity. CNC controlled for SS cladding of heads and shells



ROAD & SEA FREIGHT

HOFMANN ENGINEERING PTY LTD
3 ALICE STREET,
BASSENDEAN, PERTH,
WESTERN AUSTRALIA 6054



AIRFREIGHT - ANTONOV TO 90T/PIECE



HEAT TREATMENT

Stress Relieving Furnace Ø14m x 4m

SURFACE FINISH

Abrasive blast, paint, Epoxy Coat and rubber line as required.

PACKAGING

Machined surfaces coated with rust inhibitor. Packaged and protected for road, ocean and air freight.

Telephone: +61 8 9279 5522
Facsimile: +61 8 9279 9386
Internet: www.hofmannengineering.com
Email: mail@hofmannengineering.com